

LouieVille Pula Heights

**An Excellent Investment Opportunity
A Gated Affordable Community Lifestyle**



2 bedroom apartments from P549,000 + Vat

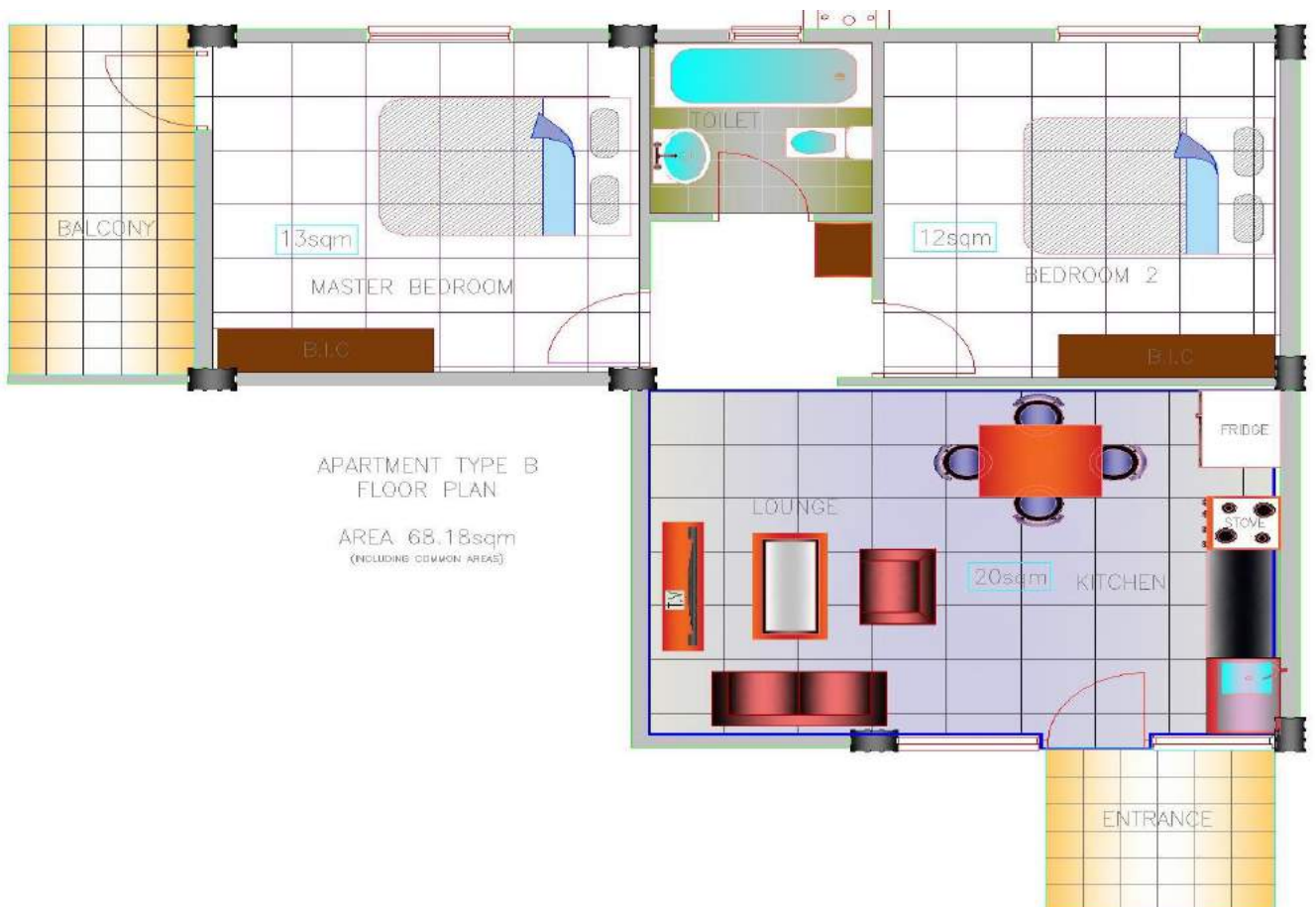
- Plot no 1201, 1.5 kms from Pula Spar Mall (Matatu Kopelo Road)
- 2 Bedroom Apartments
- Gated Estate, 24x7 Security
- Central Park, Lapa & Braai area
- Swimming Pool, Kids Play area
- Open-plan Kitchens & Balconies
- Built in cupboards & granite tops

LouieVille
Pula Heights

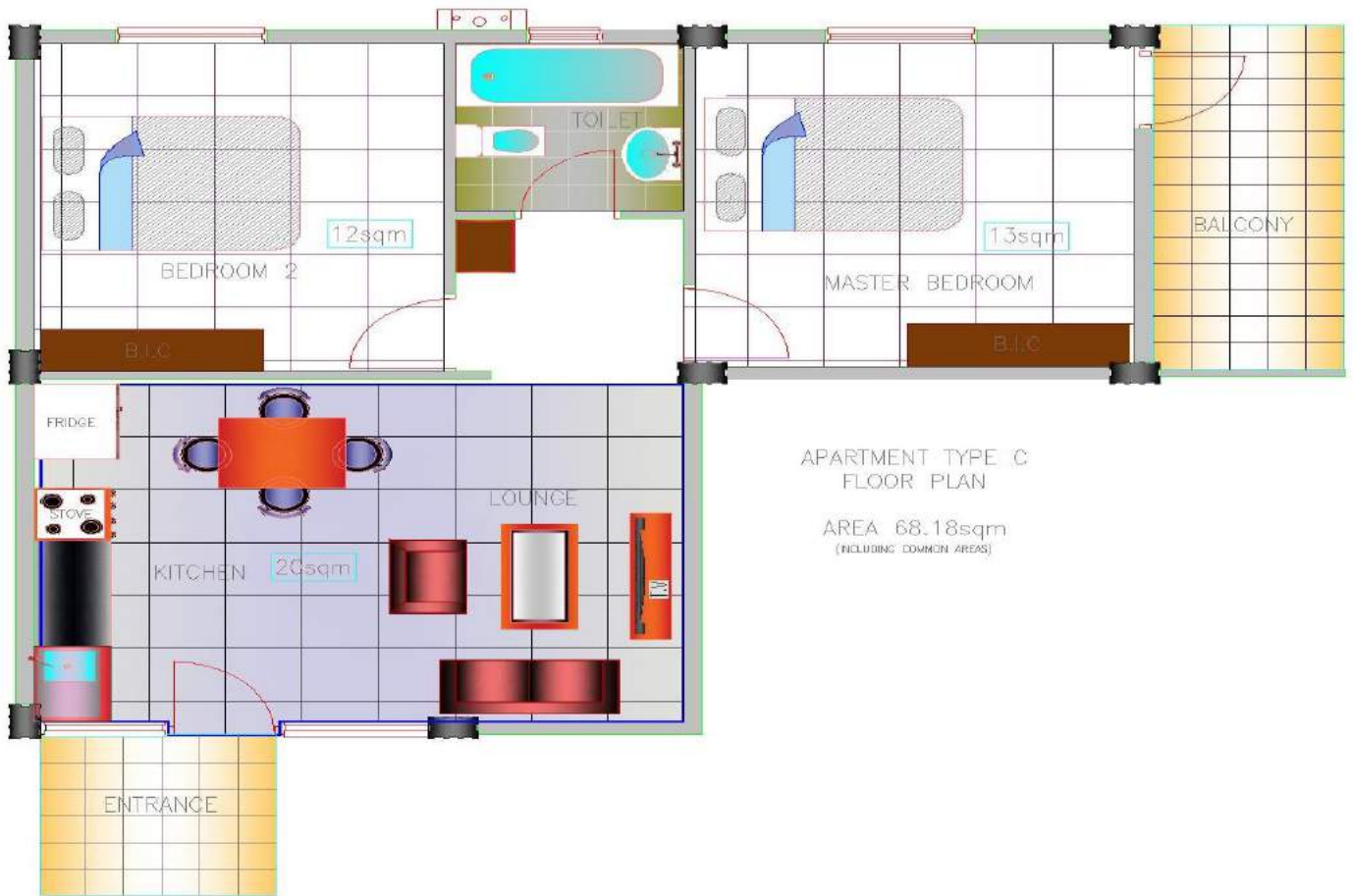
Apartment Layout A:



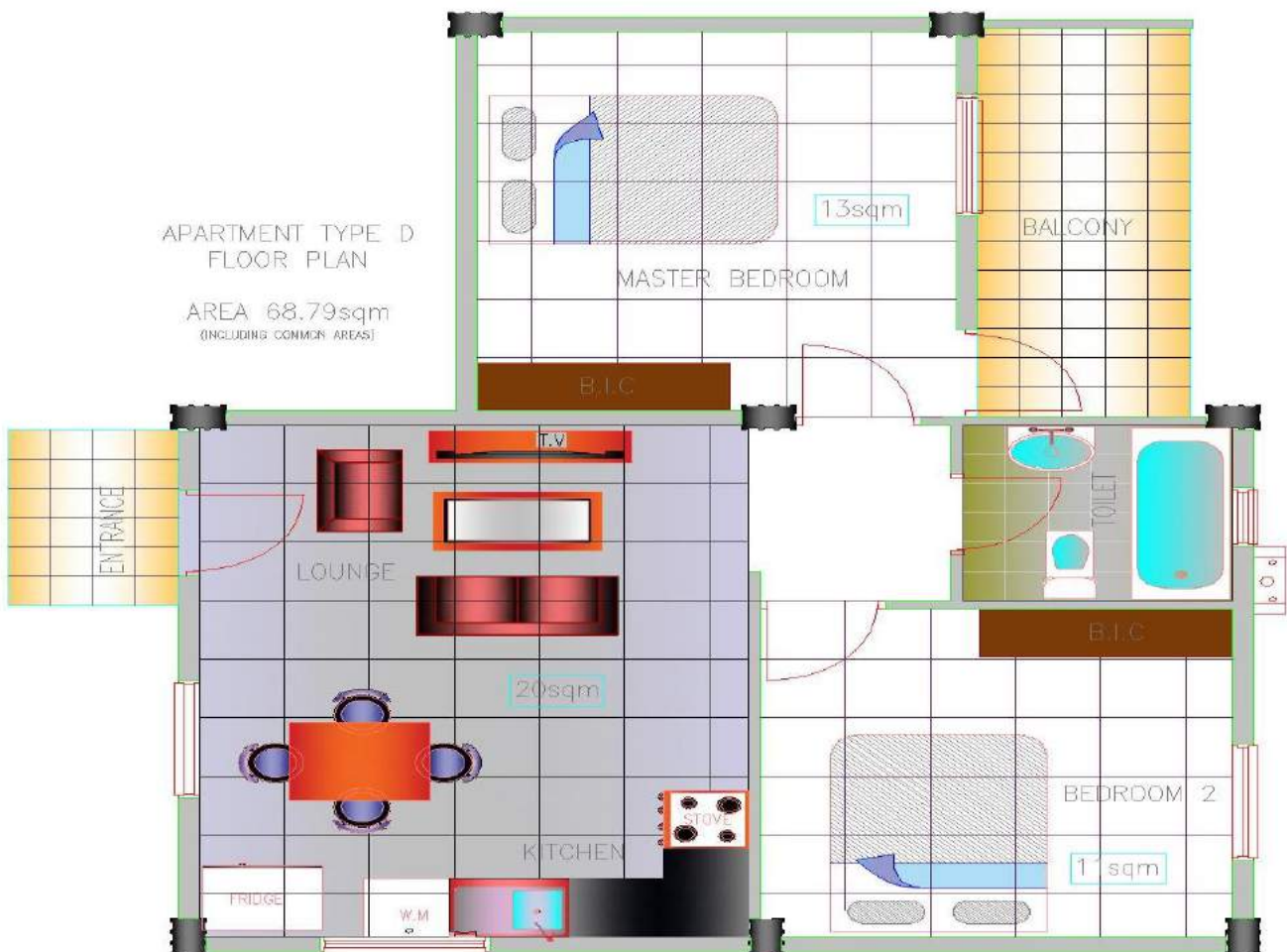
Apartment Layout B:



Apartment Layout C:



Apartment Layout D:



Location Map:



Aerial View:



Purchasing Details:

- P10,000 non-refundable deposit secures the apartment and client has to sign a development agreement.
- Client gets 6 weeks after signing to get a bank loan in place
- After 6 weeks client/Bank pays 30% which amount is allocated towards the proportionate cost of the land.
- 30% payment on completion of the Foundations and Floor Slab.
- 30% payment on the completion of the Shell and Roof.
- 10% payment at the time of handing over the completed apartment.
- Property Valuations are charged at P2,500 per apartment if needed.
- Conveyance/Transfer is charged at P4,500 per apartment.
- Bond registration is charged at P4,500 per apartment if needed.
- A monthly levy will be charged by the home owners association for the maintenance of the pool, security, gardens, common areas maintenance, common electricity & water etc. Estimated cost of P500 per month.
- Water connection/meter fee and electricity connection/meter fee as per actuals from WUC and BPC.
- The development will be completed by September 2017.
- * All Prices Exclude VAT
- Ground floor apartments are charged an additional P10,000+Vat to the purchase price.
- **BANKING DETAILS:** Distant Horizons Pty Ltd, BANC ABC, Call Account, AC No 1680616390701, Fairgrounds Branch, Branch no 552067.

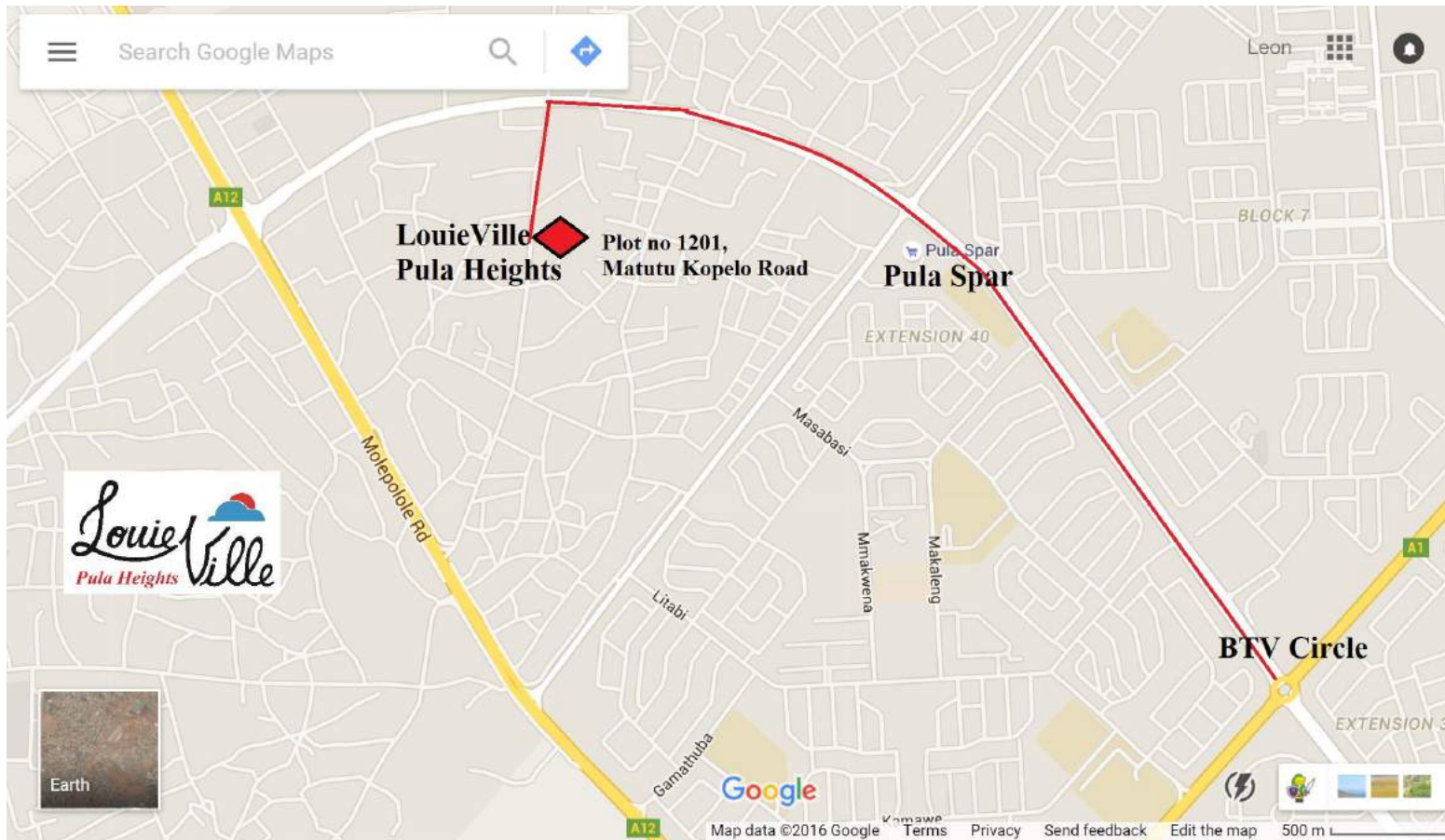
An ODE, E-MAN Enterprise



Off: 3186157, 3908480 email: marketing@eman.in

www.louieville.co.za

Road Map



*All images are artist impressions only and subject to change